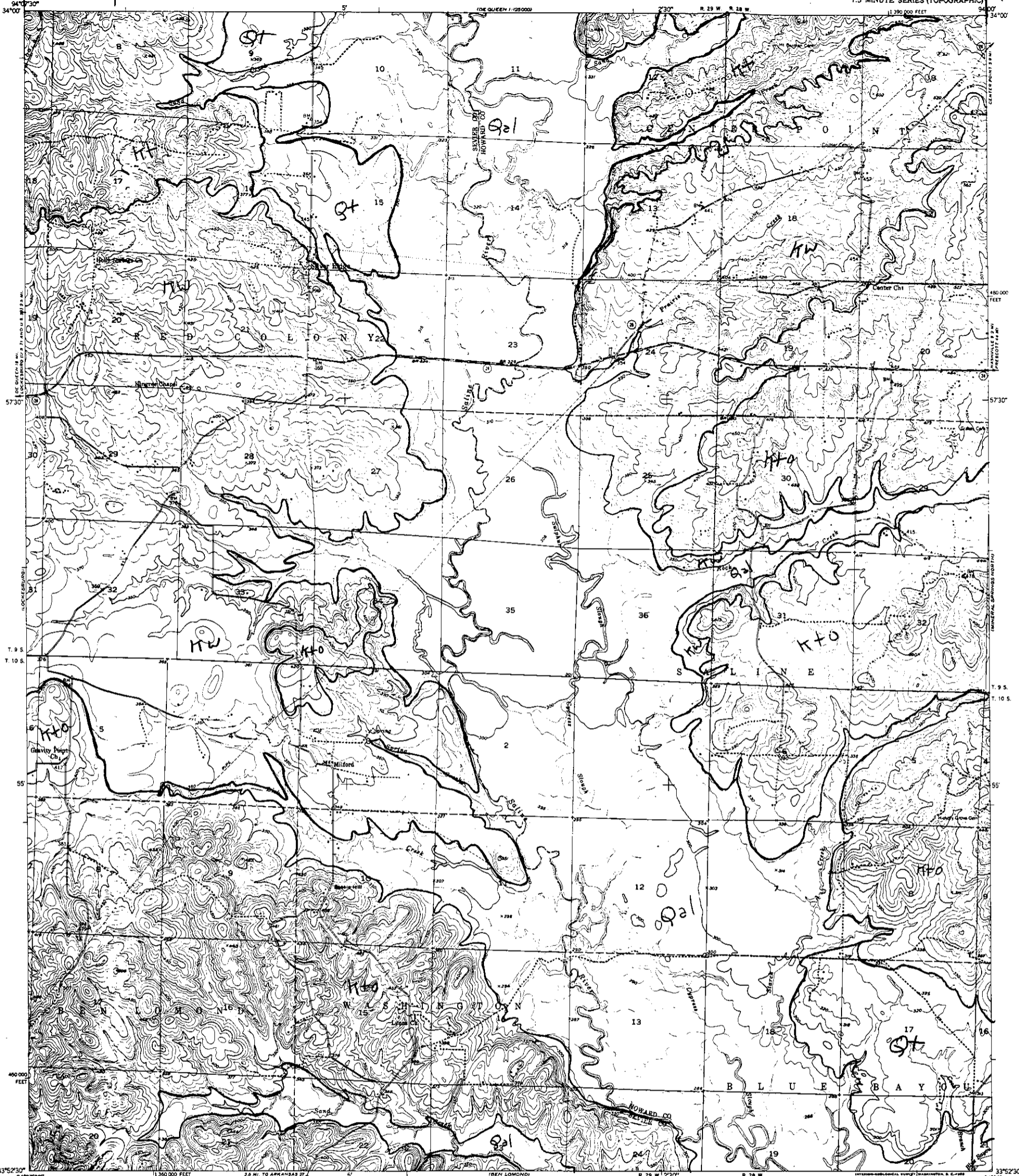
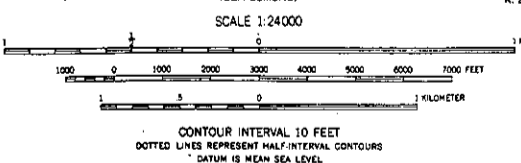


Reduce this line to

this line



Maped, edited, and published by the Geological Survey  
Control by USGS and USC&GS  
Culture and drainage in part compiled from  
aerial photographs taken 1949  
Topography by plane-table methods 1951  
Polyconic projection. 1927 North American datum  
10,000-foot grid based on Arkansas coordinate system,  
south zone



**Clardy-Bush**  
Heavy-duty **SACRAMENTO** Light-duty  
Medium-duty **SACRAMENTO** Unimproved dirt  
U.S. Route State Route

SILVER RIDGE, ARK.  
N3352.5-W9400/7.5  
1951

**MASTER COPY**

THIS MAP COMPLIES WITH NATIONAL MAP ACCURACY STANDARDS  
FOR SALE BY U.S. GEOLOGICAL SURVEY, FEDERAL CENTER, DENVER, COLORADO OR WASHINGTON 25, D. C.  
AND BY THE ARKANSAS RESOURCES AND DEVELOPMENT COMMISSION, LITTLE ROCK, ARKANSAS  
A FOLDER DESCRIBING TOPOGRAPHIC MAPS AND SYMBOLS IS AVAILABLE ON REQUEST

*Clardy-Bush*